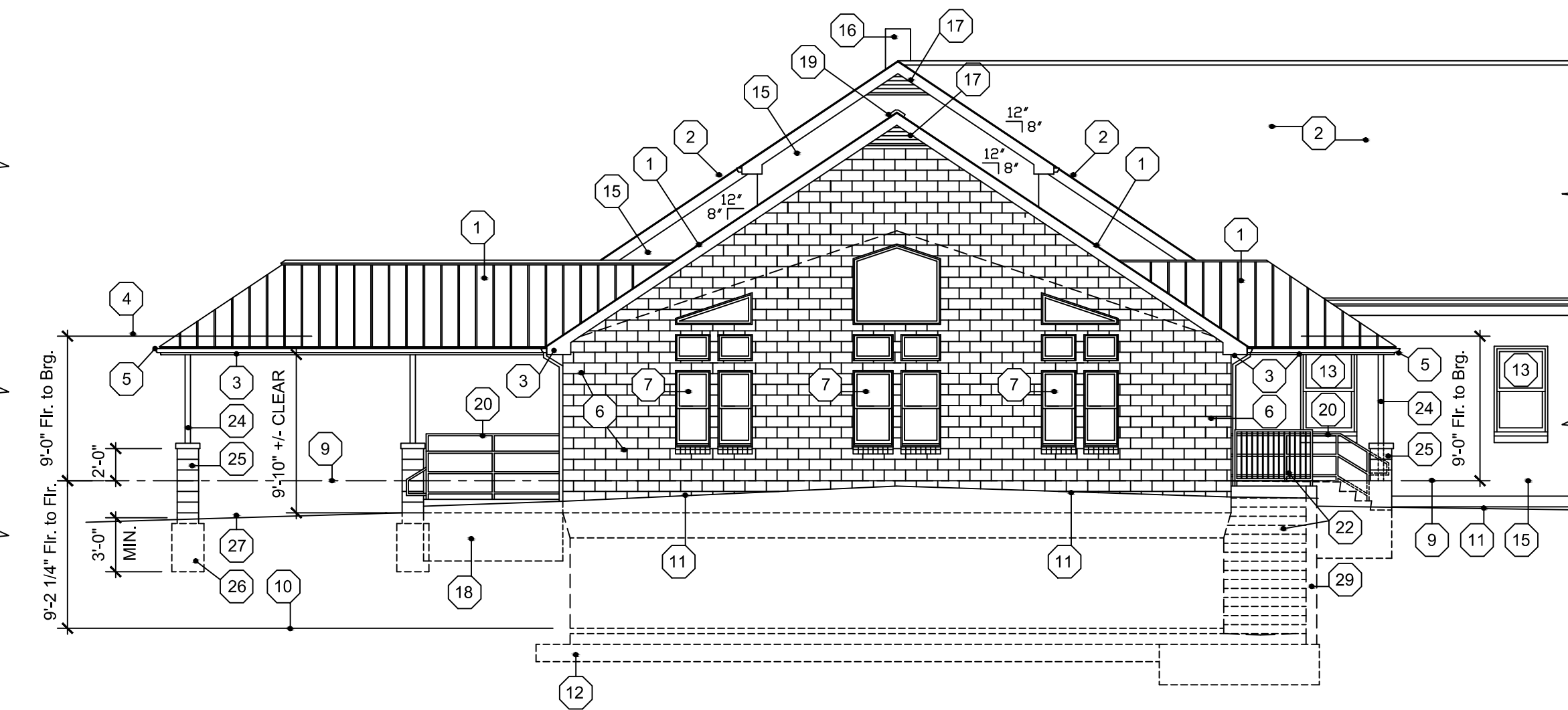
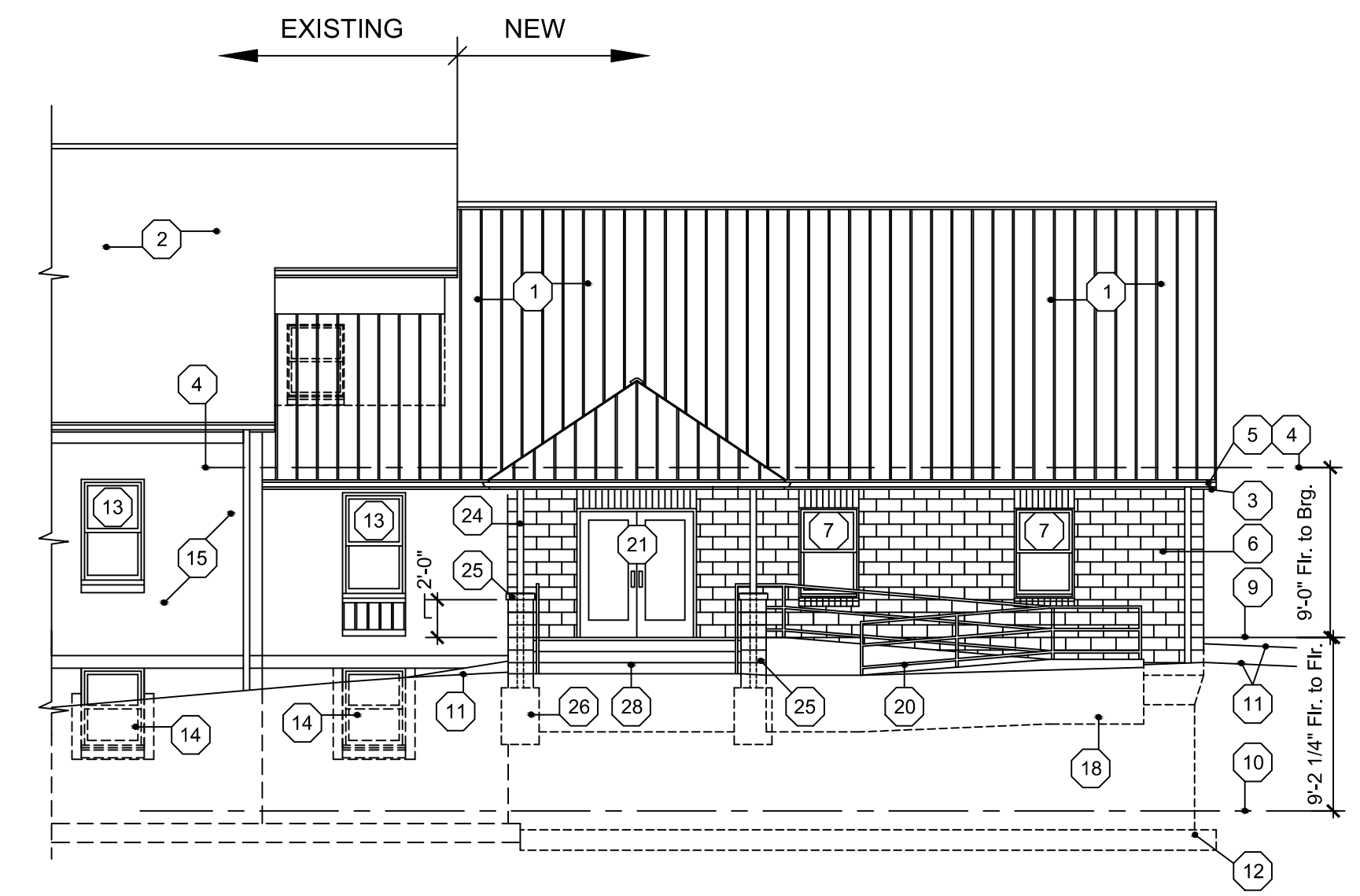


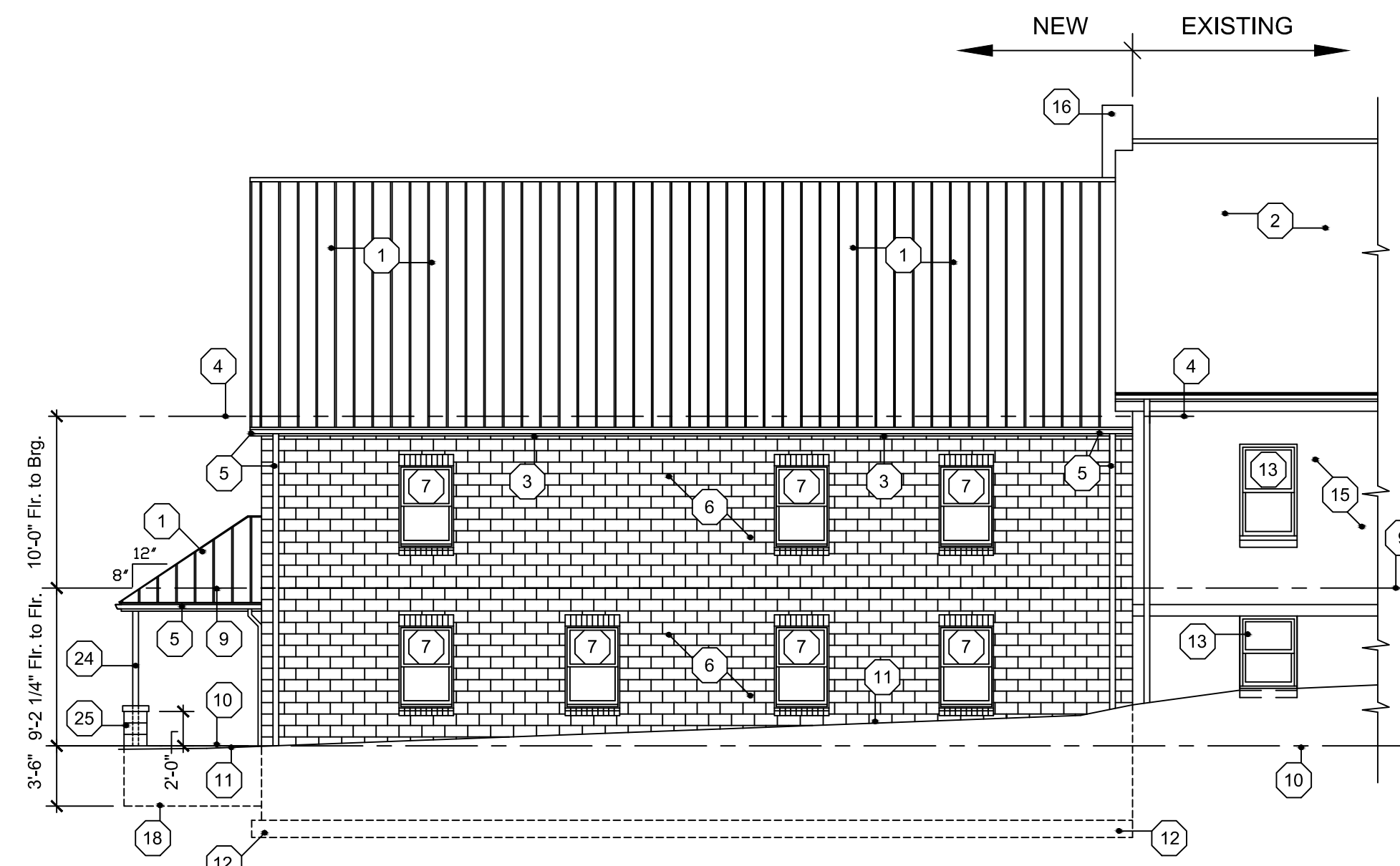
A EXTERIOR ELEVATION
A100 SCALE: 1/8" = 1'-0"



B EXTERIOR ELEVATION
A100 SCALE: 1/8" = 1'-0"



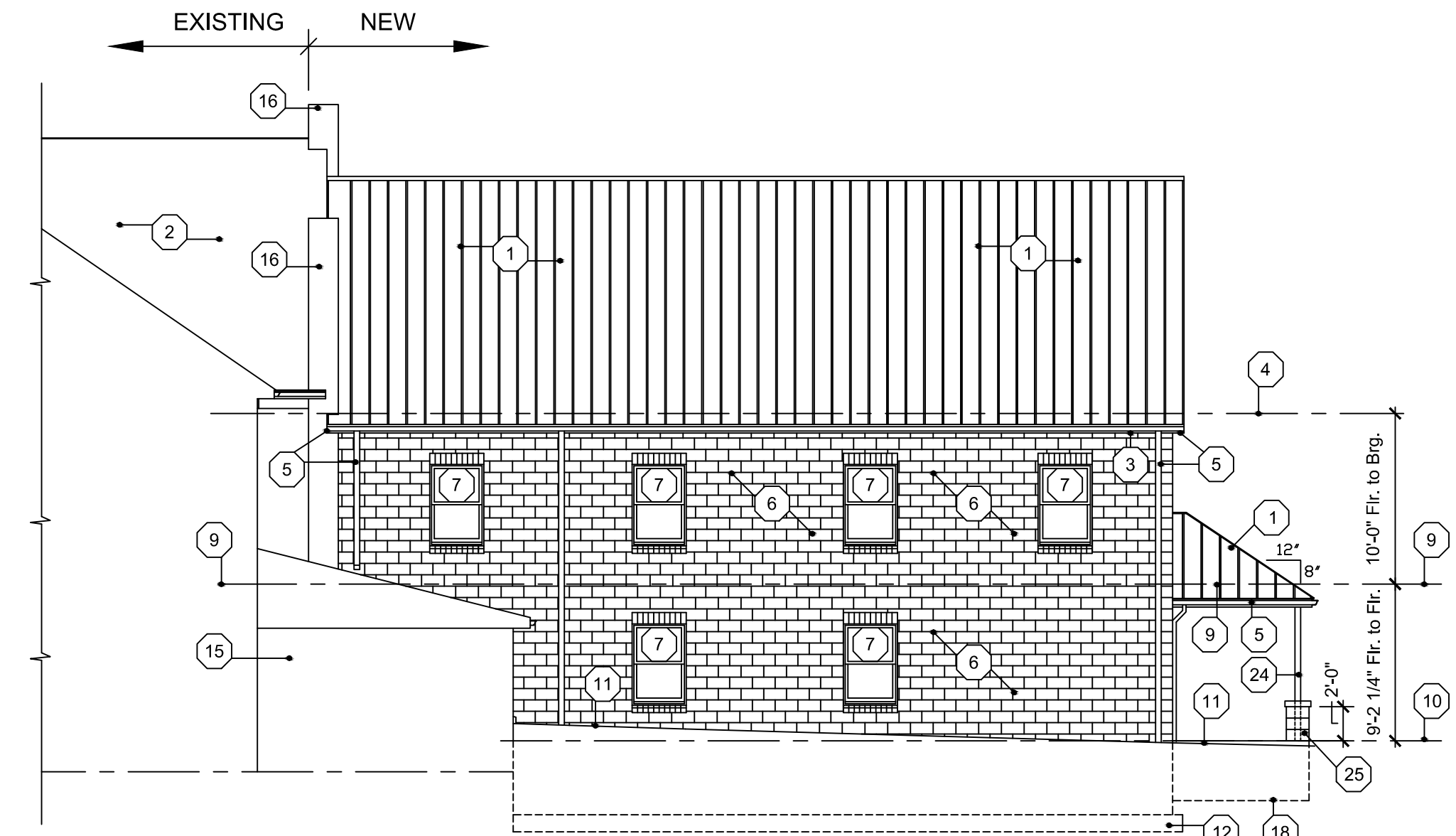
C EXTERIOR ELEVATION
A100 SCALE: 1/8" = 1'-0"



D EXTERIOR ELEVATION
A100 SCALE: 1/8" = 1'-0"



E EXTERIOR ELEVATION
A100 SCALE: 1/8" = 1'-0"



F EXTERIOR ELEVATION
A100 SCALE: 1/8" = 1'-0"

ELEVATION MATERIAL LIST

- | | | |
|--|---|---|
| <ul style="list-style-type: none"> 1 Metal Roof to match Existing 2 Existing Metal Roof 3 Aluminum covered Fascia W/ Vinyl Vented Soffit 4 Truss Bearing 5 Gutter with Downspouts 6 Split Face Concrete Block 7 Window - See Schedule for Size and Type 8 Metal Insulated Door, Thermo-Tru 9 Upper Level Floor Line 10 Lower Level Floor Line 11 Finish Grade 12 Crushed Stone Footing | <ul style="list-style-type: none"> 13 Existing Window 14 Existing Window W/ Window Well 15 Existing Brick Veneer 16 Existing Chimney 17 Louver 18 Concrete Pad W/ Frost Wall - 8" W. x 36" Min. depth below grade 19 Ridge Vent 20 1 1/2" Dia. Alum Railing & Posts - 36" H. 21 Medium Sill Aluminum Doors W/ Insulated Safety Glass 22 Concrete Steps W/ 42" High Guard & 36" High Handrail W/ Wall Brackets | <ul style="list-style-type: none"> 23 Existing Lower Level Floor Line 24 4 x 4 Steel Tube Column W/ 8" x 8" x 1/2" Base Plate W/ 1/2" Dia. Anchor Bolts on Concrete Pier 25 16" x 16" Split Face Block Pier W/ 4" Solid Cap 26 24" Dia. Concrete Pier 27 Existing Paving 28 Concrete Steps 29 8" Precast Concrete Retaining Wall |
|--|---|---|